

Name:

ANSWERS!

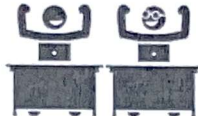
Class:



Communication



Successful Partnership



Encouragement

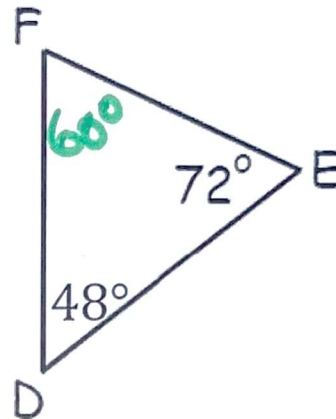
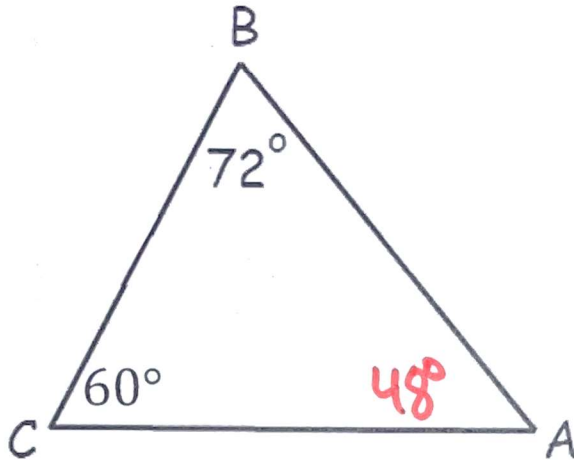


Solving Problem Together



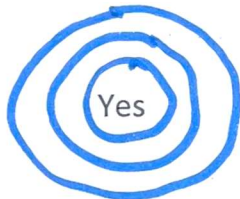
Collaboration

Question 01



Part 1

Do the internal angles of every triangle add up to 180 degrees?



Yes

No

Part 2

What is the measure of angle A?

$$180 - 60 - 72 = 48^\circ$$

Part 3

What is the measure of angle F?

$$180 - 48 - 72 = 60^\circ$$

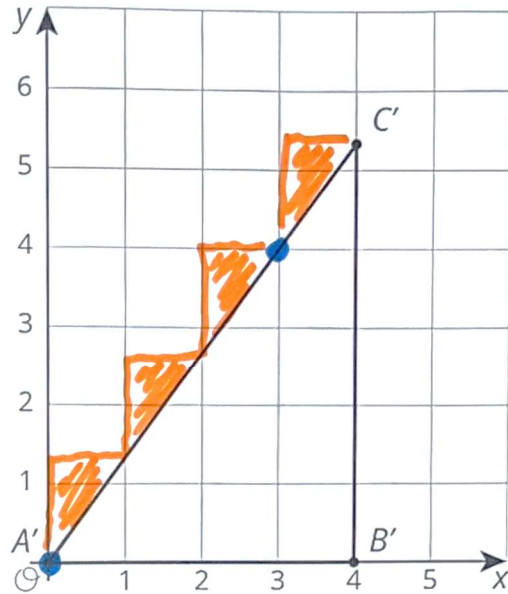
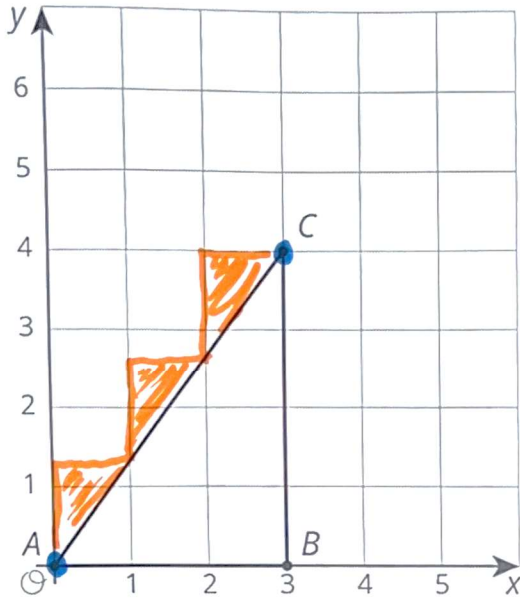
Part 4

Is triangle CBA similar to triangle FED

AAA

AAA

Yes! Both $60^\circ, 72^\circ, 48^\circ$



Part 1 How can you tell that both triangles have the same three angles?

Both are right triangles with same steepness!
Both diagonals go thru (0,0) and (3,4)



Part 2 Are the two triangles similar?

Yes

No

Angles are congruent. Sides are proportional

Part 3 C' is located at coordinate (4, m). What is the value of m?

each  is $\frac{\text{Rise } 1\frac{1}{3}}{\text{Run } 1}$  Slope = $1\frac{1}{3}$

$C = (3, 4)$ $C' = (4, 5\frac{1}{3})$