

Name:

Answers!

Class:



Communication



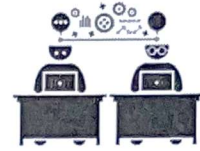
Successful Partnership



Encouragement



Solving Problem Together



Collaboration

Question 01

You take survey data at a busy town park about what type of car adults drive and how many children they have.

Part A Complete the table below.

	Sedan / Hatchback	SUV / Minivan	TOTAL
No Children	90	20	110
One Child	90	130	220
More than 1 Child	30	140	170
TOTAL	210	290	500

Part B Does having multiple children make it more or less likely you drive a SUV / Minivan?

More Likely!

Question 02

You take survey data at a college graduation about courses of study and whether or not the graduate has investments in the stock exchange.

Part A Complete the table below

	Has Stock Investment	Does Not Have Stock Investment	TOTAL
Degree in English / Humanities	60	110	170
Degree in Math / Science	60	20	80
Degree in Business / Health Sciences	100	50	150
TOTAL	220	180	400

Part B Does the data suggest having a math degree makes it more or less likely that you have stock investments?

More likely!

Question 03

You take survey data about happiness in high school and participating in sports and clubs.

Part A Complete the table below.

	Reported Liking High School	Reported Not Liking High School	TOTAL
Participated in Sport / Club	160	40	200
Did Not Participate in Sports / Clubs	30	20	50
TOTAL	190	60	250

Part B Does the data suggest that you participate in a sport / club in high school?

Yes! Participate!