

Name:

ANSWERS

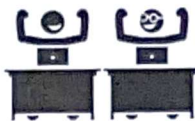
Class:



Communication



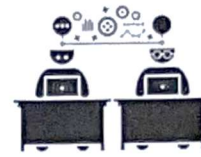
Successful Partnership



Encouragement



Solving Problem Together



Collaboration

Question 01

$$5 \cdot 5 \cdot 5 \cdot 5 \cdot 5 \cdot 5 \cdot 5 = 5^7$$

Select from the below the equivalent expression to  $5^4 \cdot (5^3)$

(a)  $5^7$

(b)  $25^7$

(c)  $5^{12}$

Question 02

Select from the below the equivalent expression to  $5^4 \cdot (5^{-2})$

$$= 5^2$$

(a)  $5^{-8}$

(b)  $5^2$

(c)  $\frac{1}{5^2}$

Question 03

Select from the below the equivalent expression to  $5^{-1} \cdot (5^{-3})$

$$= 5^{-4} = \frac{1}{5^4}$$

(a)  $5^4$

(b)  $\frac{1}{5^{-4}}$

(c)  $\frac{1}{5^4}$

Question 04

Select from the below the equivalent expression to  $5^3 \cdot (5^3)$

$$= 5^6$$

(a)  $5^6$

(b)  $5^9$

(c)  $25^6$

Question 05

Select from the below the equivalent expression to  $5^{10} \cdot (5^2)$

$$= 5^{12}$$

(a)  $5^{20}$

(b)  $5^{12}$

(c)  $25^{12}$

Question 06

Select from the below the equivalent expression to  $5^4 \cdot (5)^1 \cdot (5^3) = 5^8$

(a)  $5^7$

(b)  $5^8$

(c)  $125^7$

Question 07

Select from the below the equivalent expression to  $5^1 \cdot (5^{-2}) \cdot (5^3) = 5^2$

(a)  $5^{-6}$

(b)  $5^1$

(c)  $5^2$

Question 08

Select from the below the equivalent expression to  $5^4 \cdot (5^{-2}) \cdot (5^5) = 5^7$

(a)  $5^7$

(b)  $5^{-80}$

(c)  $\frac{1}{5^7}$

Question 09

Select from the below the equivalent expression to  $5^1 \cdot (5)^1 \cdot (5^3) = 5^5$

(a)  $5^3$

(b)  $5^4$

(c)  $5^5$

Question 10

Select from the below the equivalent expression to  $5 \cdot (5^{-5}) \cdot (5^2) = 5^{-2} = \frac{1}{5^2}$

(a)  $5^{-10}$

(b)  $\frac{1}{5^3}$

(c)  $\frac{1}{5^2}$