

Name:

Answers!

Class:



Communication



Successful Partnership



Encouragement



Solving Problem Together



Collaboration

Question 01

All of the below coordinates are on the line that passes through (5, 6) and (9, 14).

(a)
(6, a)

(b)
(8, b)

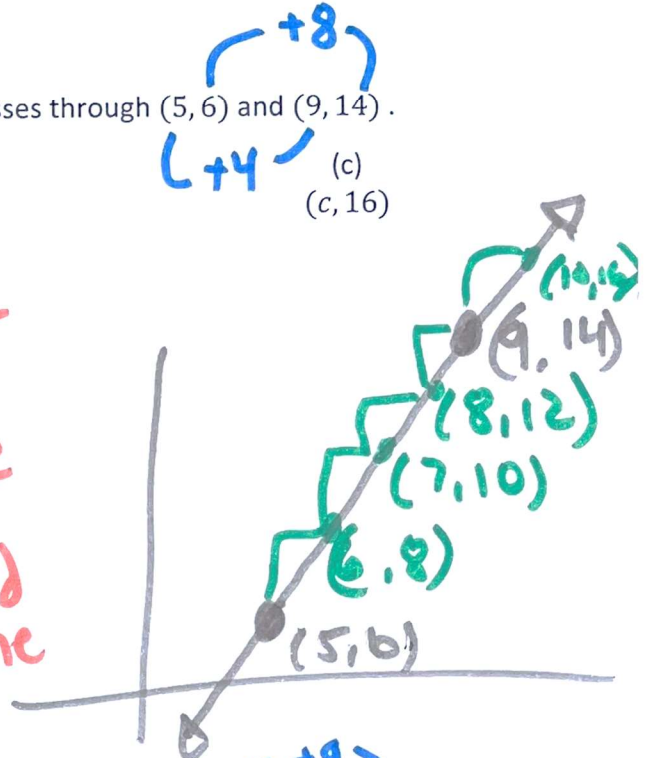
(c)
(c, 16)

$a = 8$
 $b = 12$
 $c = 10$

first find slope

$$\frac{\text{Rise}}{\text{Run}} = \frac{8}{4} = 2$$

Next use slope to build line



Question 02

All of the below coordinates are on the line that passes through (7, 1) and (10, 10).

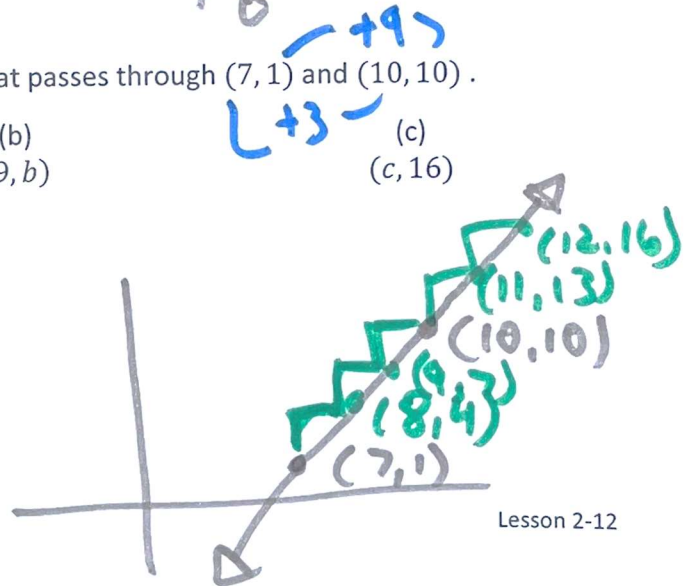
(a)
(8, a)

(b)
(9, b)

(c)
(c, 16)

$a = 4$
 $b = 7$
 $c = 12$

$$\frac{\text{Rise}}{\text{Run}} = \frac{9}{3} = 3$$



Question 03

All of the below coordinates are on the line that passes through (3, 2) and (6, 17).

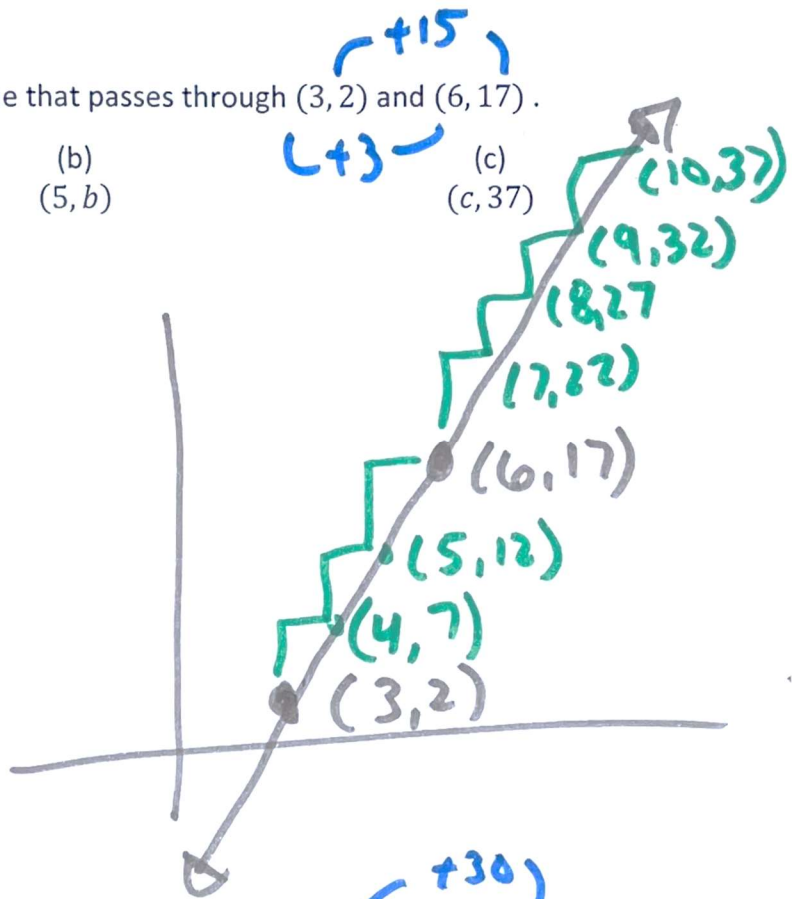
(a)
(4, a)

(b)
(5, b)

(c)
(c, 37)

a = 7
b = 12
c = 10

$$\frac{\text{Rise}}{\text{Run}} = \frac{15}{3} = 5$$



Question 04

All of the below coordinates are on the line that passes through (1, 22) and (6, 52).

(a)
(2, a)

(b)
(3, b)

(c)
(c, 40)

a = 28
b = 34
c = 4

$$\frac{\text{Rise}}{\text{Run}} = \frac{30}{5} = 6$$

