

Name:

ANSWERS!

Class:



Communication



Successful Partnership



Encouragement

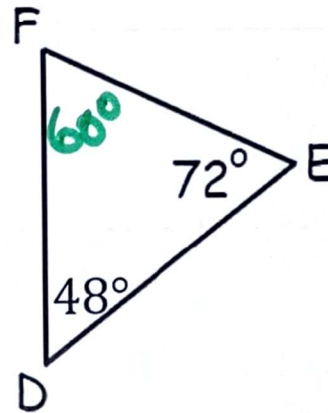
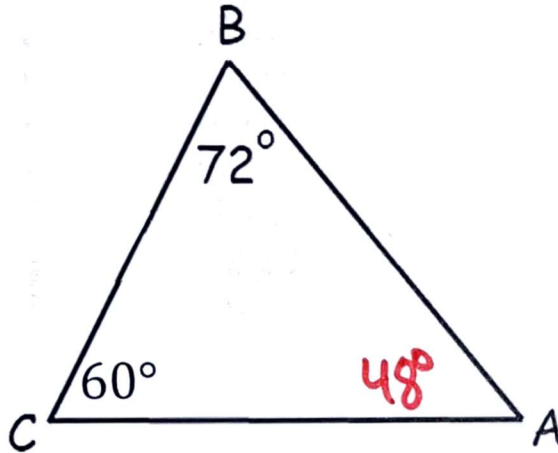


Solving Problem Together



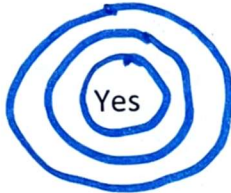
Collaboration

Question 01



Part 1

Do the internal angles of every triangle add up to 180 degrees?



No

Part 2

What is the measure of angle A?

$$180 - 60 - 72 = 48^\circ$$

Part 3

What is the measure of angle F?

$$180 - 48 - 72 = 60^\circ$$

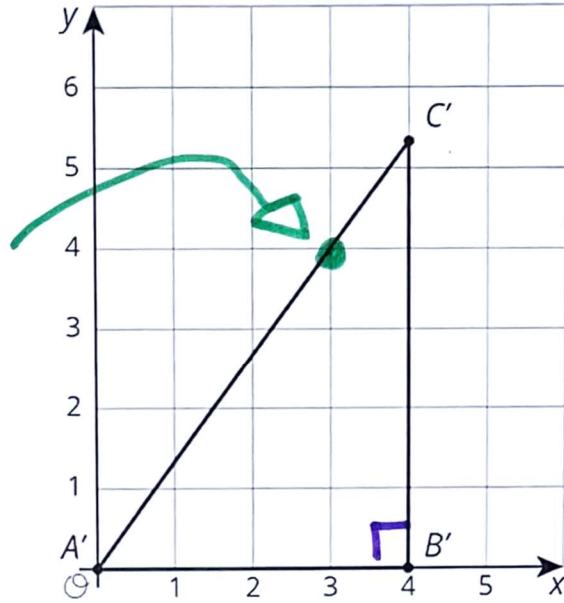
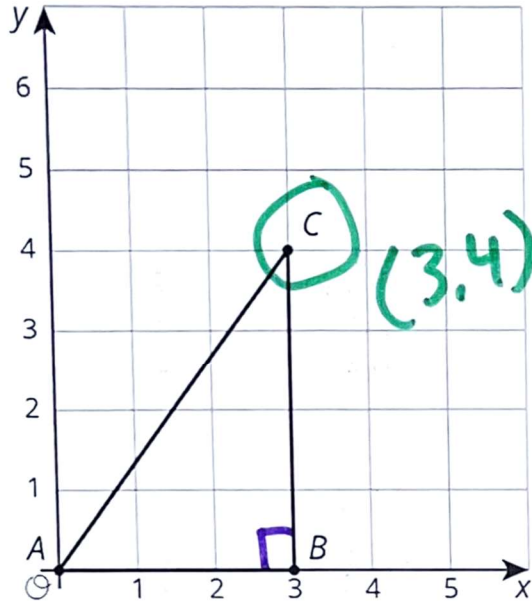
Part 4

Is triangle CBA similar to triangle FED



Yes! Both  $60^\circ, 72^\circ, 48^\circ$

Question 02



Part 1 How can you tell that both triangles have the same three angles?

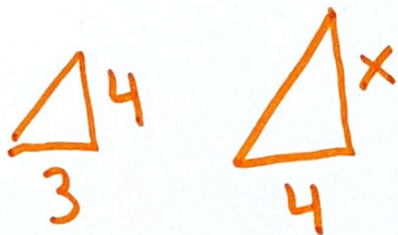
Yes! Both Right Triangles with same steepness!

Part 2 Are the two triangles similar?

Yes

No

Part 3 C' is located at coordinate (4, m). What is the value of m?



$$3 \times \text{SF} = 4$$

scale factor =  $\frac{4}{3}$

$$4 \times \frac{4}{3} = \frac{16}{3} = 5\frac{1}{3}$$

$$C' \Rightarrow (4, \frac{16}{3})$$