

Name:

ANSWERS!

Class:



Communication



Successful Partnership



Encouragement



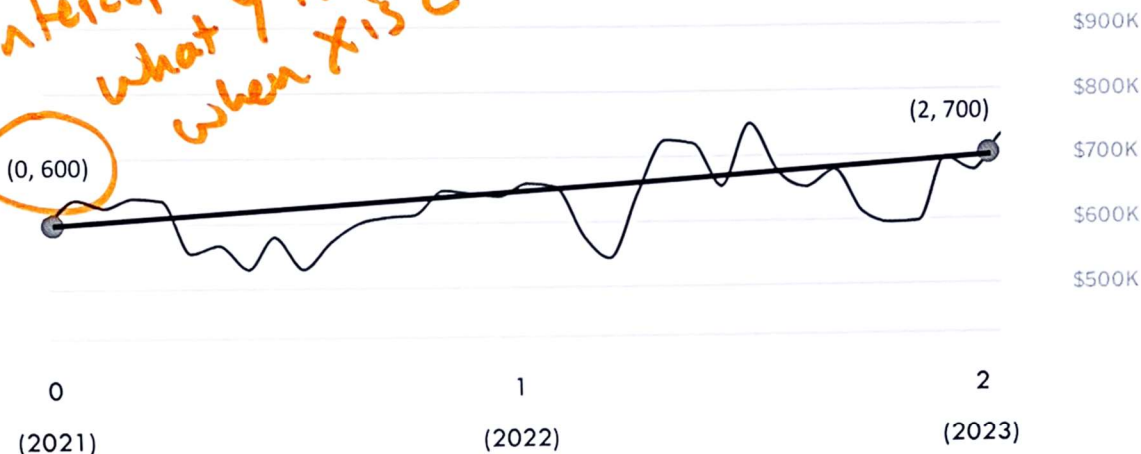
Solving Problem Together



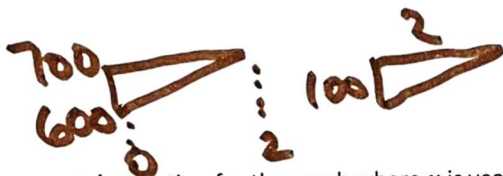
Collaboration

The graph models the increase in the median house sale price in Wakefield over the past five years. The x-value represents the number of years since 2021 and the y-value represents thousands of dollars.

y-intercept  
what y is  
when x is zero



Part 1



Write a  $y = mx + b$  equation for the graph where  $x$  is years since 2021 and  $y$  is the predicted median sale value in thousands of dollars.

$y = mx + b$   
↙ slope  
↘ y-intercept  
Ⓞ  $\frac{\text{rise}}{\text{run}}$

Part 2

$y = 50x + 600$

What does the slope represent in your answer to Part 1 above?

It means that the median house price has been increasing by \$50K every year.

Part 3

Based on the graph, what would the median house sale price in Wakefield be in 2031?

$y = 50x + 600$

$y = 50(10) + 600$

\$1,100K or

$\$1,100,000$

↙ 10 years from 2021