

WIN 1-1 → Comparing Proportional Relationships

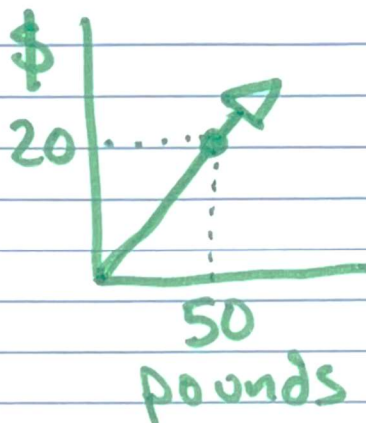
Which company has the best wholesale price for bananas?

Red Company

Green Company

Orange Company

Pounds (X)	Dollars (Y)
0	0
10	3
20	6



Each pound is \$0.35

$$\frac{y}{x} = \frac{6}{20} = 0.3$$

$$\frac{y}{x} = \frac{20}{50} = 0.4$$

$$y = 0.3x$$

$$y = 0.4x$$

$$y = 0.35x$$

The Red Company has the best price!