

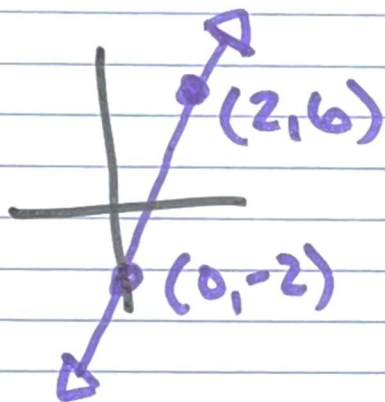
WIN 1-6 \rightarrow Equations from Tables with y-Intercepts

Key! Sketch it Out!

x	y
0	-2
2	6

$$y = mx + b$$

\downarrow
we know
 $b = -2$



$$m = \frac{\text{Rise}}{\text{Run}} = \frac{8}{2} = 4$$

$$y = 4x + (-2)$$

$$y = 4x - 2$$

ONE MORE THING!

$$m = \frac{\text{Rise}}{\text{Run}} = \frac{\text{Change in } y}{\text{change in } x}$$

x	y
0	-2
2	6

$$m = \frac{\text{Rise}}{\text{Run}} = \frac{\text{change in } y}{\text{change in } x} = \frac{8}{2} = 4$$

SAME ANSWER we just got! 😊

Some people even say it another way:

$$\frac{\text{change in } y}{\text{change in } x} = \frac{y_2 - y_1}{x_2 - x_1} = \frac{6 - (-2)}{2 - 0} = \frac{8}{2} = 4$$

Don't worry! Rise/Run is all you need!