

## Lesson 5-5 → Comparing Linear Functions

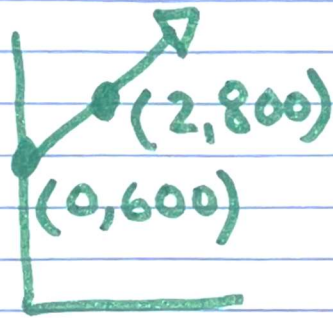
3 students save a constant \$ weekly

Function  
A

Function  
B

Function  
C

x	y
1	700
3	800
5	900



$$y = 75x + 700$$

$$y = 50x + 650$$

$$y = 100x + 600$$

$$y = 75x + 700$$

Student C started with the most \$700

Student B saves the most weekly \$100