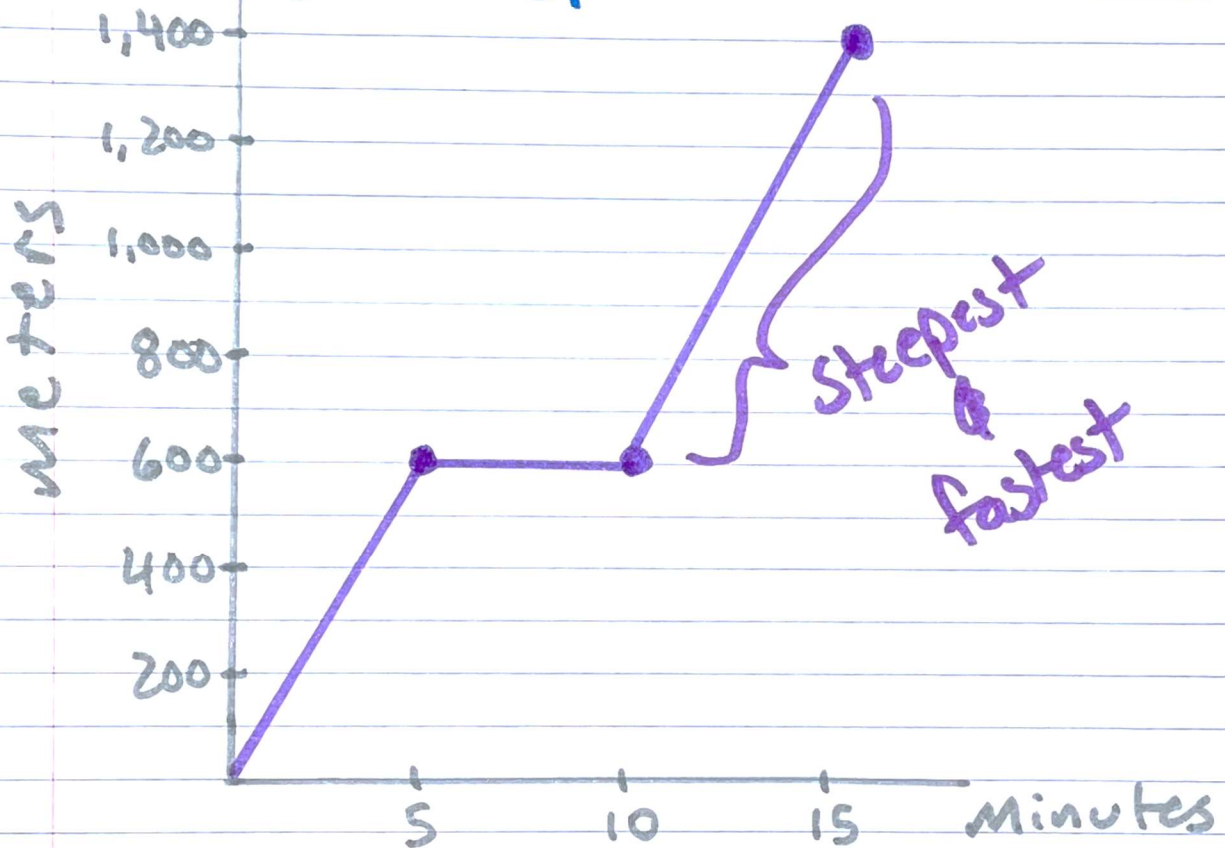


Lesson 5-8 → Piecewise Function Stories

We can use **Intervals** to interpret stories. Below, The hare runs, sleeps, then sprints.



from $x=0$ to $x=5$, The hare's speed is

$$\frac{\text{change in } Y}{\text{change in } X} = \frac{600-0}{5-0} = \frac{600}{5} = 120 \text{ meters/min}$$

from $x=10$ to $x=15$, The hare's speed is

$$\frac{\text{change in } Y}{\text{change in } X} = \frac{1400-600}{15-10} = \frac{800}{5} = 160 \text{ meters/min}$$