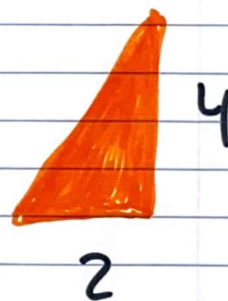
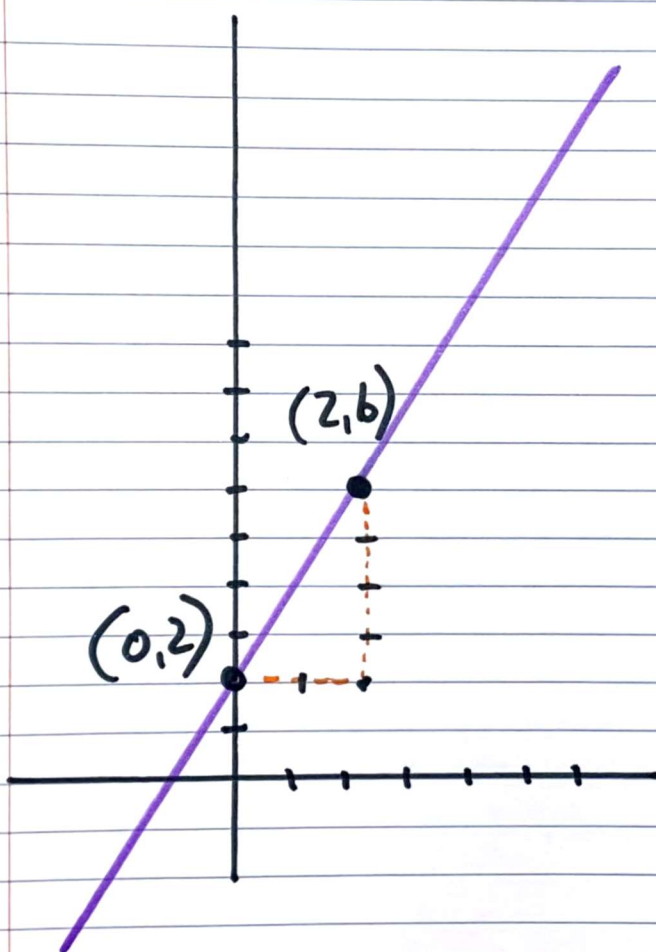


Lesson 2-10 → Slope as Rise/Run with Triangles

To get the steepness or **SLOPE** of a line, create a right triangle and get the

$$\frac{\text{Rise}}{\text{Run}}$$



$$\text{Slope} = \frac{\text{Rise}}{\text{Run}} = \frac{4}{2} = \textcircled{2}$$