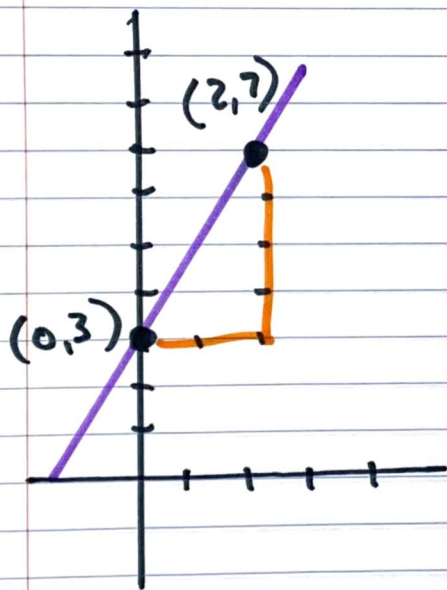


LESSON 2-11 \rightarrow Slope as $\frac{y_2 - y_1}{x_2 - x_1}$

we know slope as $\frac{\text{Rise}}{\text{Run}}$

Another way to say $\frac{\text{Rise}}{\text{Run}}$ is $\frac{y_2 - y_1}{x_2 - x_1}$



START (0, 3)

~~x_1~~ ~~y_1~~

End (2, 7)

~~x_2~~ ~~y_2~~

$$\text{slope} = \frac{y_2 - y_1}{x_2 - x_1} = \frac{7 - 3}{2 - 0} = \frac{4}{2} = \textcircled{2}$$