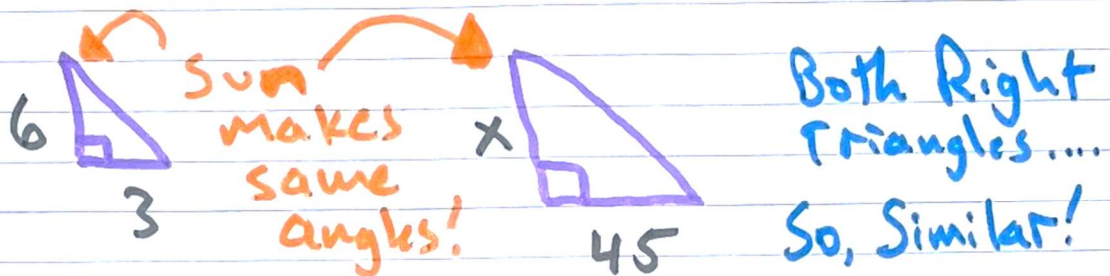
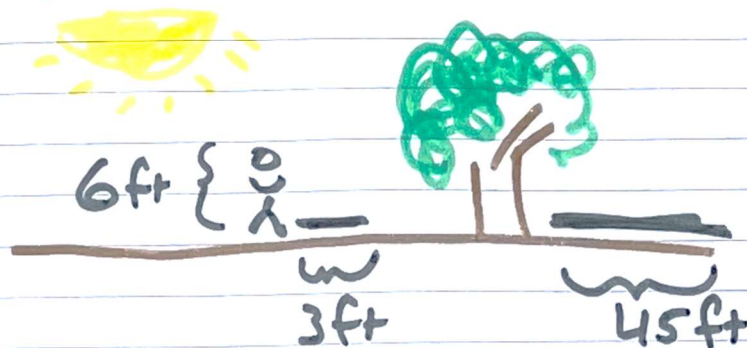


Lesson 2-13 → Using a Tree's Shadow TO Find its Height

Woah! The Sun makes Similar Triangles!



TWO WAYS TO SOLVE FOR "X"

Scale Factor

$$3 \times \text{SF} = 45$$

$$\text{SF} = 15$$

$$6 \times 15 = 90$$

tree is 90 feet

Proportional Sides

Person is twice as tall as shadow

Tree is twice as tall as shadow

Tree is 90 feet