

LESSON 2-8 \rightarrow Similar Triangles are Special

for similarity, you need **BOTH**
① same shape, and ② proportional sides

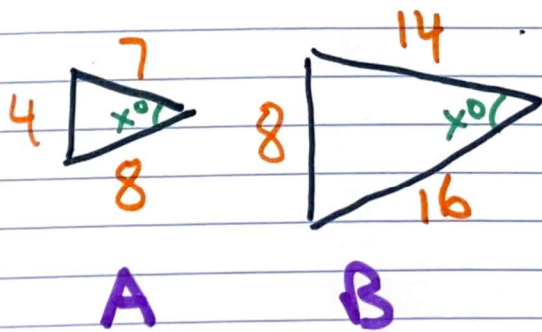
But Triangles are **SPECIAL!**

If ① is true, ② is true, and vice versa

When triangles have the same shape,
Their sides are proportional

AND

When triangles have proportional sides,
Their angles are the same (same shape)



we know
 $A \sim B$

and both have
SAME Angles!