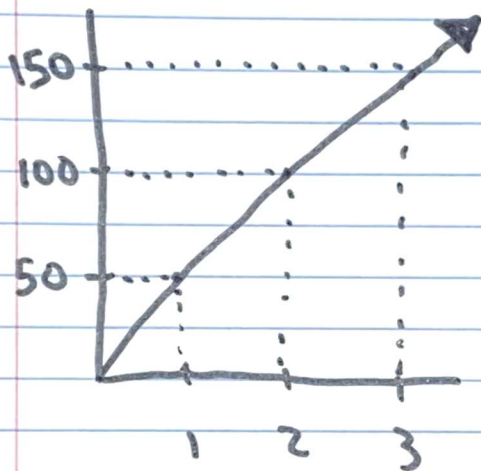


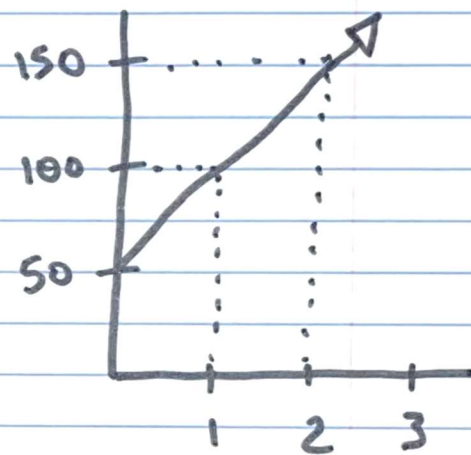
Lesson 3-2 → Seventh Grade $y = rx$
to Eighth Grade $y = mx + b$

Seventh
Grade



$$\text{slope} = \frac{y}{x} = 50$$

Eighth
Grade



$$\text{Slop} = \frac{\text{Rise}}{\text{Run}} = 50$$

Equation: $y = rx$

Constant
of
Proportions (r)
or
Rate

$$y = 50x$$

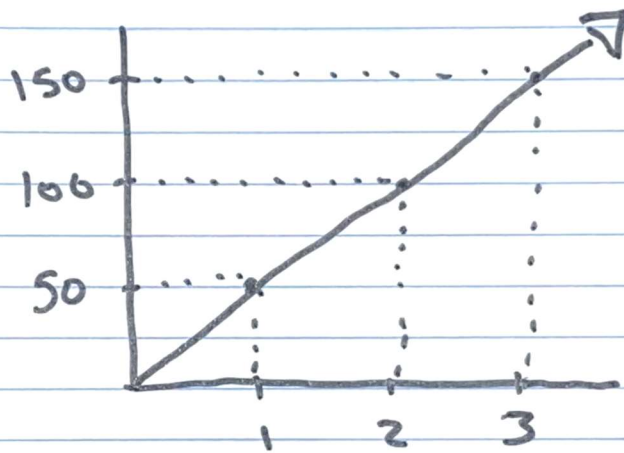
Equation: $y = mx + b$

Slope
y-intercept

$$y = 50x + 50$$

Some more good news!

$y = mx + b$ works for
proportional relationships too!



$$y = mx + b$$

Slope \rightarrow m
 y -intercept \rightarrow b

$$\frac{\text{Rise}}{\text{Run}} = m = 50$$

$$b = 0$$

$$y = 50x + 0$$

$$y = 50x$$