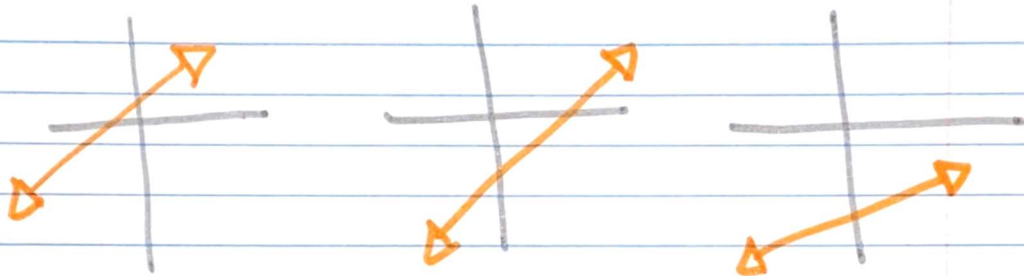
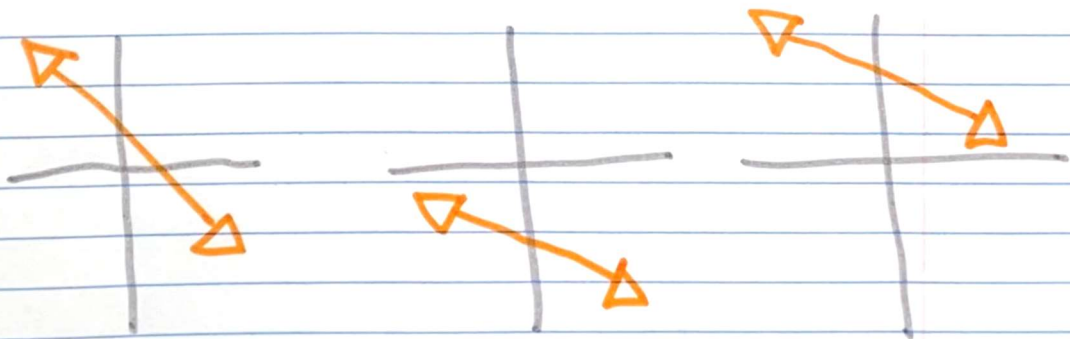


Lesson 3-9 $\rightarrow y = mx + b$ with Negative Slopes

Positive slopes point up left-to-right

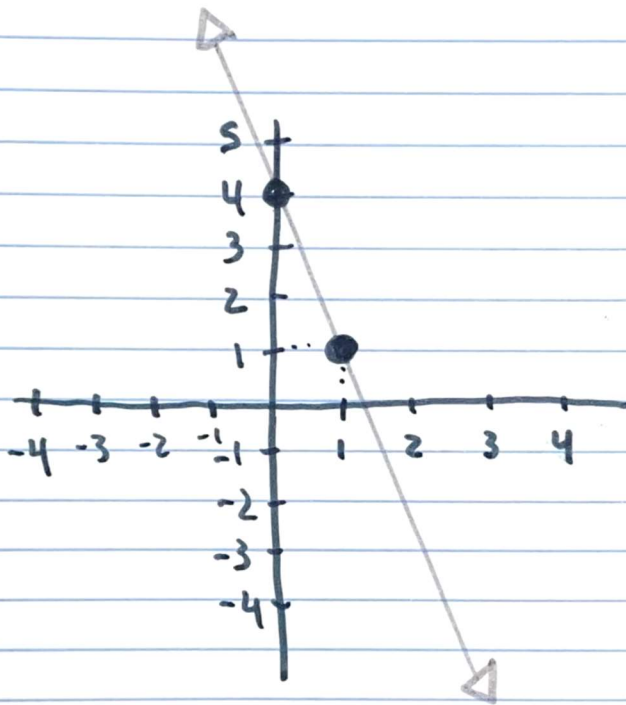


Negative slopes point down left-to-right



Slope is still $\frac{\text{Rise}}{\text{Run}}$

Rise is just Negative



$$\frac{\text{Rise}}{\text{Run}} = \frac{-3}{1} = -3$$

$$y\text{-int} = 4$$

$$y = mx + b$$

$$y = -3x + 4$$