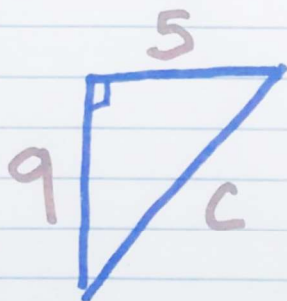
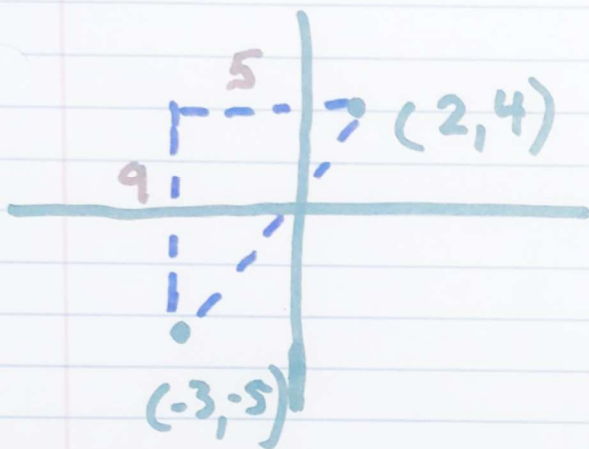


Topic 12-4 -> Calculating Distance in The Coordinate Plane

This is just like finding Rise over Run for a linear equation!

Find the distance between $(-3, -5)$ and $(2, 4)$. Round to the tenth



$$a^2 + b^2 = c^2$$

$$9^2 + 5^2 = c^2$$

$$81 + 25 = c^2$$

$$106 = c^2$$

$$106 = c^2$$

$$10.2956... = c$$

$$\boxed{10.3}$$