

Name:

ANSWERS!

Class:



Communication



Successful Partnership



Encouragement

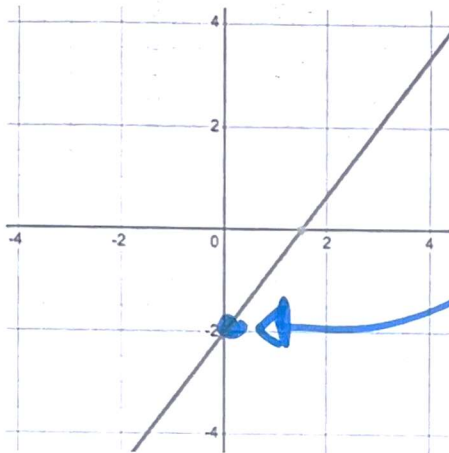


Solving Problem Together



Collaboration

Question 01



(0, -2)

(3, 1)

(6, 8)

(9, 10)

The graph above represents the equation: $4x - 3y = 6$

Select two solutions to the equation below.

(Note, solution points may be outside the window of the graph.)

$$4x - 3y = 6$$

$$(0, -2)$$

$$4(0) - 3(-2) = 6$$

$$0 + 6 = 6$$

$$6 = 6$$

yes!

$$4x - 3y = 6$$

$$(3, 1)$$

$$4(3) - 3(1) = 6$$

$$12 - 3 = 6$$

$$9 = 6$$

No!

$$4x - 3y = 6$$

$$(6, 8)$$

$$4(6) - 3(8) = 6$$

$$24 - 24 = 6$$

$$0 = 6$$

No!

$$4x - 3y = 6$$

$$(9, 10)$$

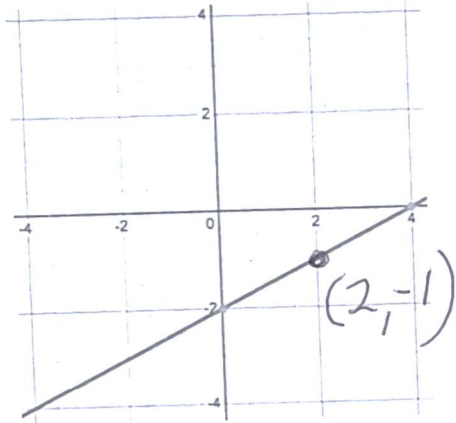
$$4(9) - 3(10) = 6$$

$$36 - 30 = 6$$

$$6 = 6$$

yes!

Question 02



$$y = \frac{1}{2}x - 2$$

$(0, 2)$
 $2 = \frac{1}{2}(0) - 2$
 $2 = 0 - 2$
 $2 = -2$
 NO!
 $(2, -1)$
 $-1 = \frac{1}{2}(2) - 2$
 $-1 = 1 - 2$
 $-1 = -1$ YES!

The graph above represents the equation: $y = \frac{1}{2}x - 2$

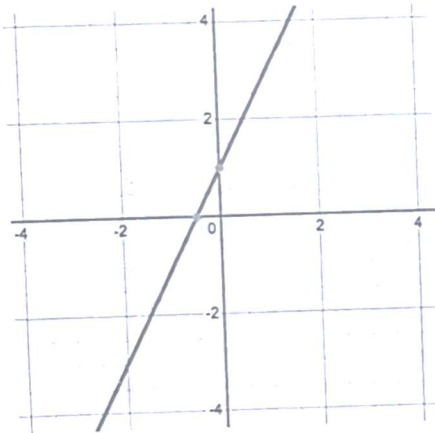
Select two solutions to the equation below.

(Note, solution points may be outside the window of the graph.)

$$y = \frac{1}{2}x - 2$$

$(0, 2)$
 $(2, -1)$
 $(10, 8)$
 $(10, 3)$
 $(10, 8)$
 $8 = \frac{1}{2}(10) - 2$
 $8 = 5 - 2$
 $8 = 3$
 NO!
 $(10, 3)$
 $3 = \frac{1}{2}(10) - 2$
 $3 = 5 - 2$
 $3 = 3$
 YES!

Question 03



$$y = 2x + 1$$

$(-10, -19)$
 $-19 = 2(-10) + 1$
 $-19 = -20 + 1$
 $-19 = -19$
 YES!
 $(-11, -5)$
 $-11 = 2(-5) + 1$
 $-11 = -10 + 1$
 $-11 = -9$
 NO!

The graph above represents the equation: $y = 2x + 1$

Select two solutions to the equation below.

(Note, solution points may be outside the window of the graph.)

$$y = 2x + 1$$

$(-10, -19)$
 $(-5, -11)$
 $(-2, -3)$
 $(2, 4)$
 $(-2, -3)$
 $-3 = 2(-2) + 1$
 $-3 = -4 + 1$
 $-3 = -3$
 YES!
 $(2, 4)$
 $4 = 2(2) + 1$
 $4 = 4 + 1$
 $4 = 5$
 NO!