

Name:

ANSWERS!

Class:



Communication



Successful Partnership



Encouragement



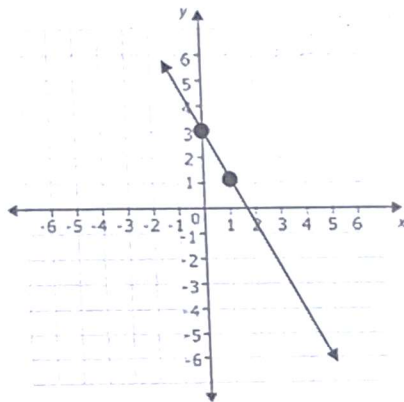
Solving Problem Together



Collaboration

For each of the below, write the $y = mx + b$ equation.

Question 01



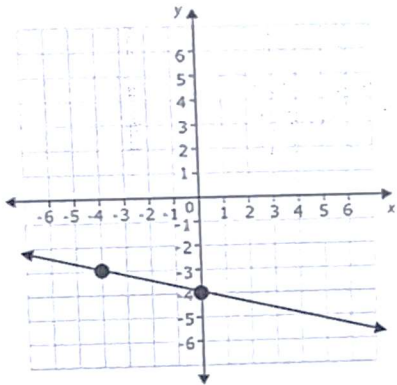
$b = 3$
 slope is negative

2
1

$$m = \frac{\text{rise}}{\text{run}} = \frac{-2}{1} = -2$$

$$y = -2x + 3$$

Question 02



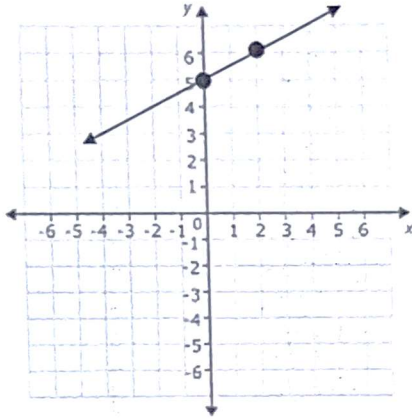
$b = -4$
 slope is negative

1
4

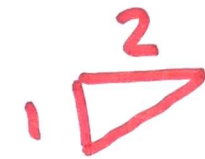
$$m = \frac{\text{rise}}{\text{run}} = \frac{-1}{4}$$

$$y = -\frac{1}{4}x - 4$$

Question 03



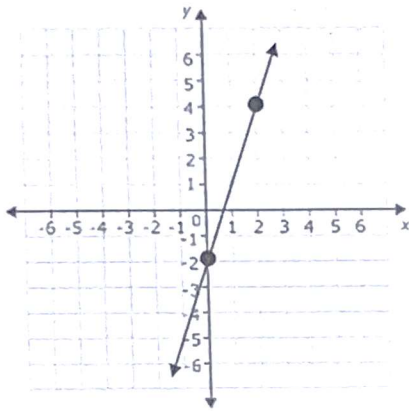
$b=5$
slope is positive



$$m = \frac{\text{rise}}{\text{run}} = \frac{1}{2}$$

$$y = \frac{1}{2}x + 5$$

Question 04



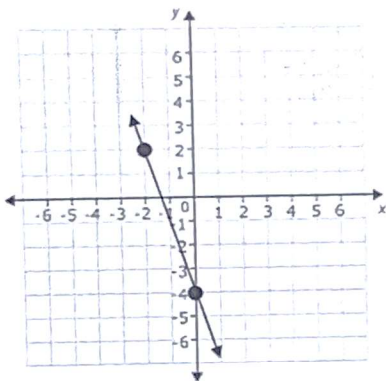
$b=-2$
slope is positive



$$m = \frac{\text{rise}}{\text{run}} = \frac{6}{2} = 3$$

$$y = 3x - 2$$

Question 05



$b=-4$
slope is negative



$$m = \frac{\text{rise}}{\text{run}} = \frac{-6}{2} = -3$$

$$y = -3x - 4$$